



Fixture housing: galvanized steel previously stove-enamelled with UV-stabilised white polyester resin; rounded edges to prevent cutting; polycarbonate end caps.

Standard supply: nylon fastening pawl.

LED module: support in natural anodized extruded aluminium. Micro-fluted diffuser in methacrylate.

On request: 3000K versions, DIMM 1-10V and DALI.

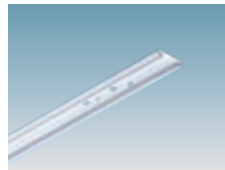
LED: Power factor ≥ 0.9 . Luminous flux maintenance 80%: 50.000h (L80B20). Photobiological safety class: Exempt group.



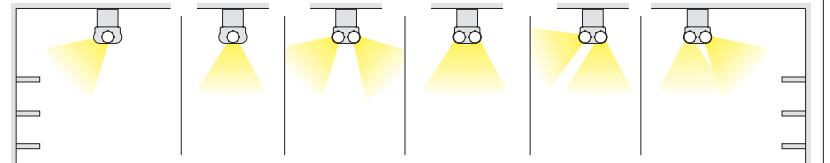
Accessories Rapid System

acc. 6405 upper cover	
1/2x12W	237603-46
1x24W	237617-00
1x30W	237613-00
2x48W	237624-00
2x60W	237625-00

White steel. For ceiling mounting.

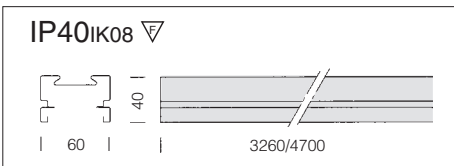


The LED tubes can be rotated to adjust light and therefore optimise the performance of optic accessories.



6000 Rapid system - track			
		S	
length	colour	weight	code
3260	white	3.25	132900-00
4700	white	4.70	132923-00

Designed to be quickly attached to the Rapid System series luminaires.

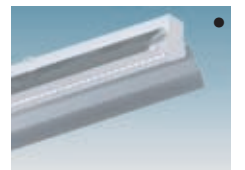
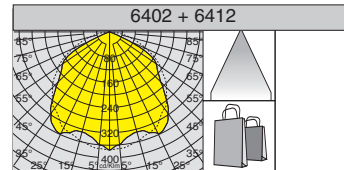
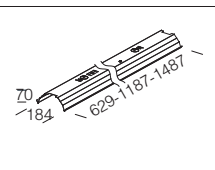
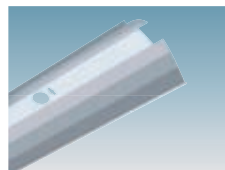


Provision for cable management



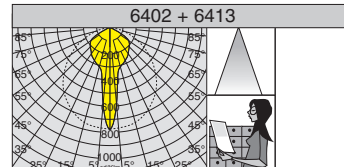
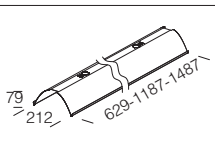
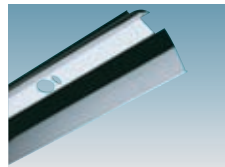
acc. 6412 wide-beam	
L=629	237729-00
L=1187	237730-00
L=1487	237731-00

Polished matt gloss aluminium 99.85, anodised 2 μ .



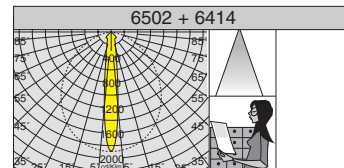
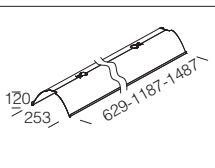
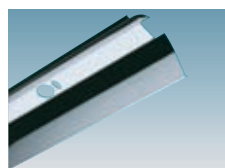
acc. 6413 narrow-beam one/lamp	
L=629	237732-00
L=1187	237733-00
L=1487	237736-00

Polished high-gloss aluminium 99.85, anodised 2 μ .



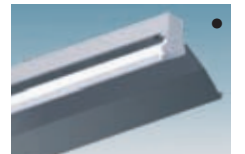
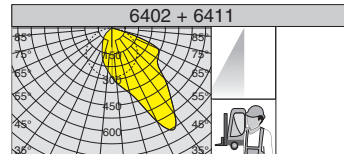
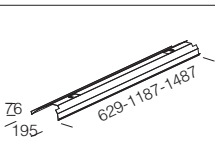
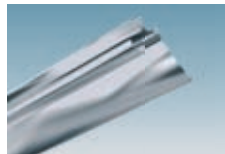
acc. 6414 narrow-beam two-lamp	
L=629	237766-00
L=1187	237764-00
L=1487	237765-00

Polished high-gloss aluminium 99.85, anodised 2 μ .

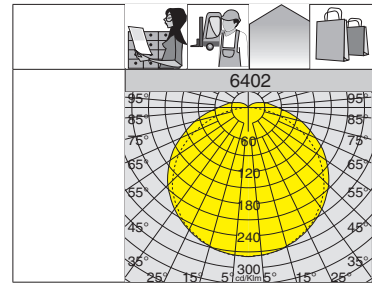
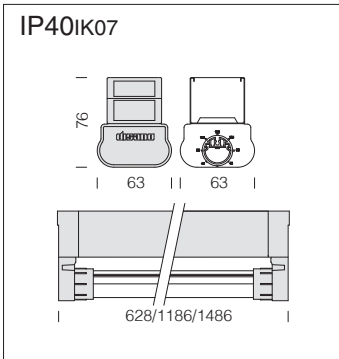


acc. 6411 asymmetric reflector	
L=629	237623-00
L=1187	237619-00
L=1487	237622-00

Polished high-gloss aluminium 99.85, anodised 2 μ .

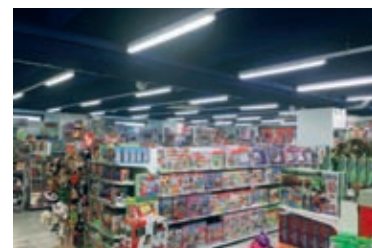
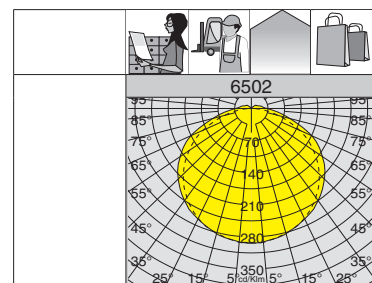
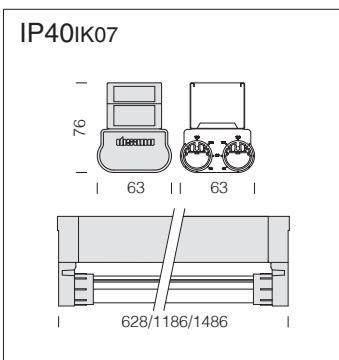


• = application examples



LED Wattage (W)	Total power consumption (W)
12	14
24	26
30	34

6402 Rapid System - LED 1x									
		CLD CELL			CLD CELL-E			LED (Tj=25°C)	
wattage	couleur	weight	L	code	weight	L	code	W	K - ølm - CRI
LED 1x	white	1.10	628	237521-00				12	4000K - 2000lm - CRI≥80
LED 1x	white	1.30	1186	237522-00	1.80	1186	237522-09	24	4000K - 4000lm - CRI≥80
LED 1x	white	1.50	1486	237523-00	2.00	1486	237523-09	30	4000K - 5000lm - CRI≥80



LED Wattage (W)	Total power consumption (W)
24	26
48	52
60	68

6502 Rapid System - LED 2x									
		CLD CELL			CLD CELL-E			LED (Tj=25°C)	
wattage	colour	weight	L	code	weight	L	code	W	K - ølm - CRI
LED 2x	white	1.10	628	237541-00				24	4000K - 4000lm - CRI≥80
LED 2x	white	1.30	1186	237542-00	1.80	1186	237542-09	48	4000K - 8000lm - CRI≥80
LED 2x	white	1.50	1486	237543-00	2.00	1486	237543-09	60	4000K - 10000lm - CRI≥80